

KINÔ

Acoustic desk divider



AESTHETIC

BENEFITS

- Sobriety & simplicity of design
- Trendy material
- 2 elegant and timeless colors

TECHNICAL

BENEFITS

- Certified acoustic performance:
 $\alpha_w = 0.95$ - $NRC = 0.90$ - $SAA = 0.91$
- Class A
- Light product and easy to install
- Free standing or desk fixing
- Fixing kit for desk bench
- Easy cable routing

5 years
GUARANTEE

ECO-FRIENDLY PRODUCT
100% RECYCLABLE PRODUCT

SINCE
2020

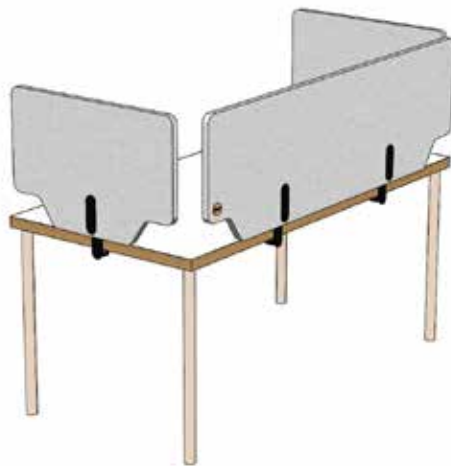
Acoustic desk divider

The Kinô acoustic desk divider consists of a polyester fiber panel. Always 19" high above the desk top, it is available in a flush version or hanging over version under the desk on which it is fixed. For more individual protection in shared spaces, the divider is available with a transparent extension.

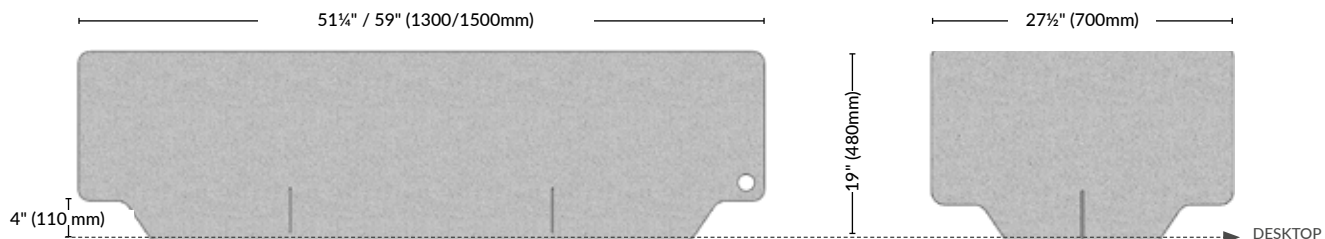
FIXINGS		FINISHES	
READY TO INSTALL on the table top (from ¼" to 2" thick)	TO BE PLACED	POLYESTER Thickness: 24mm/1"	
1 or 2 clamps RAL 9005	1 or 2 feet RAL 9005	2 COLORS Light grey / Dark grey	

KINÔ DESK DIVIDER

DIMENSIONS & AVERAGE WEIGHTS



width x height x thickness		AVERAGE WEIGHTS Without packaging	
Front desk divider Visible height above the desk: 19" (480mm)			
51¼" x 19" x 1"	1300 x 480 x 24mm	6lbs	2,8kg
59" x 19" x 1"	1500 x 480 x 24mm	7lbs	3,2kg
Side desk divider Visible height above the desk: 19" (480mm)			
27½" x 19" x 1"	700 x 480 x 24mm	3lbs	1,4kg



Kinô - Front desk divider
Visible height above the desk: 19" (480mm)

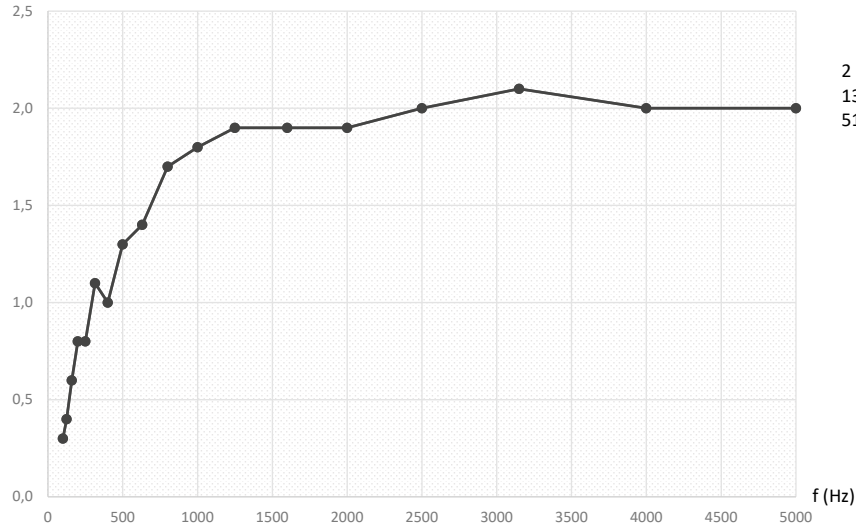
Kinô - Side desk divider
Visible height above the desk: 19" (480mm)

The Equivalent Absorption Area (EAA) of an element (A) is expressed in sqm. It characterises the absorptency of the element per frequency band: the higher the value, the greater the absorptency of the element.

f (Hz)	EEA (m2/SQM)
100	0,3
125	0,4
160	0,6
200	0,8
250	0,8
315	1,1
400	1,0
500	1,3
630	1,4
800	1,7
1000	1,8
1250	1,9
1600	1,9
2000	1,9
2500	2,0
3150	2,1
4000	2,0
5000	2,0

NF EN ISO 354

EEA (m2/SQM)



CSTB
le futur est construction

KINÔ DESK DIVIDER
FIXING SYSTEMS

TO BE PLACED	FIXING SYSTEMS (references)	Estimated installation time	TO BE CLAMPED	FIXING SYSTEMS (references)	Estimated installation time
	FRONT desk divider KITPIEDSEP-9005F (x2)	10 mn		FRONT desk divider Table top from 5 to 42mm thick KITLATESEP-9005F (x2)	20 mn
	SIDE desk divider KITPIEDSEP-9005F (x1)	5 min		SIDE desk divider Table top from 5 to 42mm thick KITLATESEP-9005F (x1)	10 mn
				Desk divider for BENCH DESKS Table top from 5 to 42mm thick Space between table top : from 5 to 50mm thick KITCENTSEP-9005F (x1 ou x2)	10 to 20 mn